

Fall 2021

News and Calendar



Preliminary Hope Street (south) facade, Los Angeles Central Library, January 1924.

Watercolor on paper, 111.3 x 71.1 cm. Bertram Grosvenor Goodhue with Carleton Monroe Winslow Sr., architects. Photo by John Kiffe.

A New Era of Library Foundation Leadership

Welcome New Board Chair Debra-Albin Riley



This past July, the Library Foundation of Los Angeles Board of Directors was honored to appoint Debra Albin-Riley as Board Chair. Albin-Riley is an acclaimed legal partner at the firm Arent Fox LLP, and has been part of the LFLA's Board since 2008. Debra succeeds Gwen Miller who stepped down as Board Chair after retiring from an illustrious career at City National Bank. "Debra comes to this role with incredible talent and expertise in team management. She is the best person to lead the Board in this new era of growth for the Foundation," says Miller. As Immediate Past President, Miller remains an active member of the LFLA's Board leadership team.

In 2007, Arent Fox LLP, a Washington D.C. based firm, decided to open an office in Los Angeles. The firm was looking to put down roots in L.A., and the Foundation not only helped cement the firm's commitment to the City but also gave Albin-Riley an added way to give back to her beloved community. Albin-Riley's attraction to LFLA accelerated after taking a tour of Central Library. "I went into the Rotunda, and I was just transfixed," Debra says. "It's such a magical place. Everyone is welcome at the Library. No exclusions. That, mixed with my love for this city, made the Foundation a solid fit for me."

Currently, Albin-Riley is an accomplished trial lawyer, specializing in healthcare related issues. She has served as the lead attorney on

many high-profile matters and is known as a top-notch negotiator and decision-maker. She was named a 2020 Top Healthcare Lawyer by Daily Journal and has received recognition from legal ranking organizations Chambers USA and Legal 500.

In one of her first acts as Board Chair, she is spearheading an executive search for the next President of the Library Foundation of Los Angeles. During this time of transition, Board leadership has appointed Interim President Julie Tugend to serve as board liaison and head of the organization. Albin-Riley notes, "Julie comes to the Foundation with a wealth of experience in nonprofit executive management, and we firmly believe she will be a valuable addition to LFLA's already stellar team."

For the past 13 years, Albin-Riley has participated on the Board's Governance and Executive Committees. While she is coming into the role at a time of transition, she sees her new post evolving as the Foundation finds its footing in our new normal. "There are many areas of opportunity for the Library Foundation of Los Angeles. In this era of new leadership, I want to help the Foundation maintain its spirit of collaboration, communication, and exploring new ideas." Ultimately, her vision is that the Foundation will continue to aid the Library in meeting the ever-changing needs of its patrons. As she looks to the future, she's optimistic the LFLA will continue to fulfill its mission of transforming Los Angeles and the world through the power of libraries.

When Debra is not in the courtroom or taking on her duties with the LFLA Board, she enjoys spending her time with her family and close friends. She loves travel, and since our pandemic, she's enjoyed exploring the city through exhibitions and embracing her foodie side. Of course, she is also an avid reader and comes from a family of book lovers and women leaders. Her grandmother and mother were both L.A. City educators; her grandmother was an Assistant Superintendent, and her mother was an elementary school teacher. Libraries, specifically school libraries, were a large part of Albin-Riley's life. Now she has two daughters who are preserving the tradition of female leadership in Los Angeles.

Albin-Riley has set a tone of exuberance about the Library's amazing resources and the importance of Angelenos understanding their ability to access these opportunities. She recognizes that the library is a space for those who may not have the ability to own a computer, may need to understand the workings of our new digital world, or may simply need help with job or college applications. From providing access to information to producing world-class programming, Albin-Riley is supporting the Foundation in its efforts to evolve and continue to contribute to the libraries of Los Angeles.

The Library Foundation Board of Directors at-a-Glance

- The Library Foundation Board is currently made up of 45 Directors.
- The Board has nearly doubled in size since 2010.
- Directors represent a wide array of backgrounds and expertise, including banking, law, marketing, entertainment, education, artists, Information Technology, and more.
- While most Directors reside in the greater LA area, several Directors are located out of state, including Colorado and New York.
- The last three Board Chairs have been women serving in Executive roles at their respective corporations.
- The Board meets quarterly. While the primary focus of Board meetings is typical Board business and governance, Library Foundation directors have also been serenaded by an opera singer, visited by a papier-mâché Cyclopes, and sipped small-batch mezcal at Board meetings.
- **The Library Foundation is actively looking to grow the Board, particularly in areas that currently lack representation. Inquiries can be sent to info@lfla.org.**

A New Era of Library Foundation Leadership

Julie Tugend Joins Library Foundation of Los Angeles as Interim President

This fall, nonprofit management executive Julie Tugend was appointed Interim President for the Library Foundation of Los Angeles. Tugend replaces retiring Library Foundation of Los Angeles President Ken Brecher, who served since 2010. In this role, Tugend will guide the operational functions of the Foundation and act as the liaison to the LFLA Board.

"I am deeply honored to have the opportunity to help the Library Foundation of Los Angeles navigate its change in leadership and will do my best to ensure the LFLA is well positioned to continue to marshal community resources to support the Library and its invaluable programs," says Tugend.

Julie Tugend is a management consultant and executive coach with over 30 years of executive level experience in philanthropy, government, and the nonprofit sector. Her civic involvement dates back to the beginning of her career when she served as an aide in Mayor Tom Bradley's administration. Julie served as Senior Vice President and Chief Operating Officer for The California Endowment, the largest health foundation in the state. Her consulting clients have included Community Partners, the California Mental Health Services Authority, Vista del Mar Child and Family Services, Young Storytellers and First 5 LA. Julie is a graduate of Reed College and The Second City Conservatory.



Announcing Shawn Rubin, Chief Financial Officer



Although it's not officially a prerequisite, every staffer of the Library Foundation of Los Angeles has a special connection to libraries. Even the newest member to the team, Shawn Rubin, who came on board as Chief Financial Officer (CFO) this September recalls her early days at the Woodland Hills Branch. "I remember going there for hours. You could get anything you wanted at the Library. It was a

huge part of my childhood," says Shawn. "I was a huge reader as a child. I was that kid that would sleep at somebody's house and wait till the kid went to bed so I could read all their books. Now my daughter is that kid," she laughs. In her new role as CFO, Shawn will help to reshape and advance fundraising efforts as well as oversee accounting and budgeting. Shawn has extensive experience in finance through her past work at top tier companies like American Express, Citi, and Nortel Networks and she has an MBA in Finance from Indiana University's Kelley School of Business. Most recently, she worked as VP of Finance for ExED, a non-profit that provides financial services to charter schools.

"I really feel like the Library Foundation is a continuation of the type of work that we were doing at ExED. The whole mission at ExED is to support schools so that they can do the best they can to support the students and communities of Los Angeles. There's a true belief that education is the thing that can lift up

all communities," Shawn says. In her work, she has seen how crucial financial support can be to the impact of educational organizations.

"Providing a child with a substandard education puts them at a disadvantage that is massive. I worked with a tiny little high school and every year it was like they were going to go under, but we kept them going. Their first graduating class had 100% of their students accepted to four-year colleges and 100% of their students were first in their families to go to college. It was amazing. Our financial work enabled the school to get those kids to college."

Shawn is excited to continue her trajectory of helping to support the local community through her role at the Library Foundation. "I'm incredibly excited to be coming to work at such an important and really impactful organization," she says. "I feel so honored to take on a leadership role at an organization that I think is so special and has done so much for Los Angeles."

A New Exhibit Goes Backstage at a Historic Puppet Show



“It’s puppets, it’s movie stars, it’s quirky Los Angeles,” says Curator and Senior Librarian Christina Rice about a new exhibit at Central Library’s Getty Gallery. **“Life on a String: the Yale Puppeteers and the Turnabout Theatre”** presents the life’s work of three men who forged a professional and deeply personal bond that lasted a lifetime and who invited the city of Los Angeles to turnabout.

In 1998, the Los Angeles Public Library became custodian of a vast collection of ephemera chronicling the careers of the Yale Puppeteers. The trio of Harry Burnett (1901-1993), Forman Brown (1901-1996), and Richard “Roddy” Brandon (1904-1985) first came together in the 1920s and developed a shared vision of sophisticated adult entertainment in the form of marionettes.

In the early 1930s, they ran the Teatro Torito theatre on Olvera Street and from 1941-1956, operated the Turnabout Theatre on La Cienega Boulevard in Los Angeles, endeavors which brought them international fame while charming celebrities like Elsa Lanchester, Amy Semple McPherson, and even Albert Einstein.

For the first time, these programs, posters, scrapbooks, costumes, props, and marionettes are on exhibition. “It’s probably our largest and

most varied archival collection,” says Rice, who has been imagining making this archive accessible to audiences for over a decade. Some of the eclectic pieces on display include a collection of ballerina rat puppets from a 1932 production that was proudly advertised as “the rattiest show in town.” Beyond the whimsical marionettes, the real story of the Yale Puppeteers is one of human connection.

In the 1930s, Forman Brown began writing about his life as a gay man under the pseudonym Richard Meeker. His autobiographical novel called *Better Angel* chronicled his sexual awakening, but he never imagined it being published. However, in 1997 the novel was rediscovered and reprinted under the assumption that Richard Meeker was no longer alive. This rediscovery enabled Brown to finally come forward as the author and come out of the closet at the age of 86 and speak candidly about his longtime romantic partnership with Roddy Brandon.

In conjunction with this exhibit, the Los Angeles Public Library is putting *Better Angel* back in print as a fitting tribute to Brown and this highly regarded work of literature. “Since being rediscovered three decades ago, *Better Angel* has increased in reputation and is now regarded as one of the earliest examples of LGBTQ literature with a positive outcome,” writes City Librarian John F. Szabo in the forward of the newly reissued book. “The Los Angeles Public Library hopes this volume will play a role in increasing the visibility and accessibility of *Better Angel* and to honor the man who wrote it.”

**Life on a String:
the Yale Puppeteers and
the Turnabout Theatre**

**Getty Gallery at Central Library
Through March 6, 2022**

exhibits.lapl.org

**The book, along with Yale Puppeteer
collectibles like scarfs, pins, and
postcards can be purchased at
The Library Store.**

shop.lfla.org



Images courtesy of the Los Angeles Public Library

The Future of the Library is Now

“I’ve come to learn our Los Angeles Public Library, with its 73 branches and robust website, offers so much more than I ever imagined to our broader community,” says Rosalind Jarrett Sepulveda, a longtime supporter of the Library Foundation of Los Angeles. “Kids from tiny tots to school-age can develop the same love of reading I had as a child through story sessions and summer programs that even include a meal! Teenagers cannot just get help with homework or college prep, but can engage in Teen Council civic action projects in their neighborhoods. Adults cannot only learn to read, but earn a high school diploma, get critical health information, or borrow hotspots to connect to the Internet... All you need is a Library card!”

Jarrett Sepulveda, like many dedicated Library patrons and supporters, knows firsthand the Library’s power to transform lives. In addition to leaving a charitable gift to the Library in her estate plans, she and her husband Lamar created an endowed fund to support educational and cultural programs at the Library. She continues, “By becoming a Bibliophile and establishing an Endowment for Lifelong Learning through the Library Foundation of Los Angeles, we are doing our small part to ensure the Library’s vital programs will continue even after we are gone.”



Rosalind Jarrett Sepulveda and Lamar Sepulveda

During the challenges of last year, the Los Angeles Public Library saw record-breaking use. Now, as our community recovers and looks ahead to the future, it’s more important than ever that we ensure the Los Angeles Public Library will continue to thrive for years to come. You can take action today to lift up the next generation for whatever comes their way.

PLANNED GIFTS

Plan ahead by including the Library Foundation of Los Angeles in your estate plan through one of these flexible options:

Bequest
The simplest way to make a planned gift is to create a bequest in your will or trust. Usually this is a brief clause that includes a specific gift amount or percentage of your estate.

Retirement Plans and Life Insurance
Designate the Library Foundation of Los Angeles as a beneficiary of your retirement plan or insurance policy.

Charitable Remainder Trust
Contribute appreciated assets (such as cash, securities, or real property) into a Trust and generate a fixed income stream. The Library Foundation would receive the remainder of the principal after a specified time period.

ENDOWED FUND

Create your Library legacy through an endowed fund. Each fund has an invested principal that is never spent but earns income. The fund can be named after you or in honor or memory of a loved one, and can be created in installments over a number of years or as part of your estate plan.

Sample language

Simply add a line to your Will or Trust like this:

“I give [amount or percentage of estate] to the Library Foundation of Los Angeles, located at 630 W. 5th Street, Los Angeles, CA 90071, Tax ID 95-4368250.”

JOIN THE BIBLIOPHILES

By making a contribution through a planned gift or endowed fund, you join other like-minded, forward-thinking supporters of the Library.

Bibliophiles receive invitations to special events throughout the year on a wide range of topics and acknowledgement in the Library Foundation’s Annual Honor Roll of Donors.

Creating a planned gift is an incredibly personal commitment and we respect your wishes should you choose to remain anonymous. Above all, your generosity will have a lasting impact for our community.

**Please contact Sharon Padua
for more information.
(213) 292-6268
SharonPadua@lfla.org**

Behind-the-Scenes: Special Projects

From unearthing the Library’s historic collections of menus, autographs, and sheet music to a celebration of Shakespeare, the Library Foundation of Los Angeles has researched, designed, and produced a range of multi-dimensional exhibition projects in partnership with the Los Angeles Public Library. In 2017, the Library Foundation took part in the Getty Foundation’s Pacific Standard Time initiative (Los Angeles/Latin America) by re-contextualizing the historic murals in Central Library’s Rotunda through a Oaxacan lens. Each of these projects is years in the making and we’re excited to be underway on **No Prior Art**, part of the Getty’s next iteration of Pacific Standard Time focused on art and science.



Todd Lerew
Director of Special Projects

“If you look up the Google Street View for the small library I frequented as a child in Crooks, South Dakota, you will find that branch still surrounded by perfectly flat cornfields on three sides; this may be in part why I went through a serious choose-your-own-adventure book phase at that time... Now, when I’m doing research for a project or exhibition, I love all the unexpected connections that can be made just by moving through the city with an open mind and visiting with people across all our diverse and sprawling communities. I am inspired by those who make the effort to share their collections or creations and am drawn to stories that are unexpected and underrepresented. Much of my professional experience has been in non-profit education— from tutoring first generation immigrant students at my high school in South Dakota, to working as a college advisor and after-school program coordinator at public high schools in San Francisco. I have also long been involved in music and the arts, playing in bands as well as inventing musical instruments, and producing and promoting concerts. I came to Los Angeles in 2012 to attend CalArts, where I got an MFA in Experimental Music Composition. I feel extremely fortunate to be in a position with the Library Foundation that allows me to continue working in the cultural and creative sphere, while supporting an institution of higher learning and discovery whose mission I believe in deeply. I have a quote on my desk taken from a short story by Jorge Luis Borges: ‘I declare that the Library is endless.’ I love that. You might come to a library for the things that make it familiar, and leave inspired by something that surprised you or exposed you to a new way of thinking or seeing the world.”

Set to launch in 2024, our special projects team is currently combing through the Library’s patents collection— Central Library is home to the most extensive intellectual property (IP) resources on the West Coast. By highlighting some of the most fascinating inventions as well as unheralded innovators in Los Angeles’s communities, the project aims to shine a fresh light on the very nature of creativity and invention.

We’re checking in on what inspires the LFLA’s special projects team as they bring this new project to life.



Julia Tcharfas
Research Assistant for No Prior Art

“I studied Fine Art at the School of the Art Institute of Chicago, and like many others would use the Museum as a shortcut to class. I would stroll down the long corridor towards Warhol’s Chairman Mao, grab a chocolate from Felix Gonzalez Torres’ candy pile, and exit towards the classroom through the American furniture gallery. Later, I did my MFA in London at UCL and was surrounded by spectacular museums that transport you to another world like the Sir John Soane and the Hunterian. Exhibitions at the V&A like Cold War Modern and Disobedient Objects changed the way I look at objects of design. From then on, I always wanted museums to be a part of my lived environment. At home, I started collecting Year 2000 memorabilia, an Earth picture library, and texts on ticks. Most recently, I became interested in archiving materials from the nearly 60-year long struggle against the completion of the 710 freeway in east Los Angeles neighborhoods. These personal collections usually end up in exhibitions that I display in the living room of my house in Pasadena, as a kind of a project space that I call ‘Before Present.’ All this to say, I am deeply invested in telling stories through objects and documents and I find searching for these materials to be a mystical and rewarding practice. The Los Angeles Public Library’s historical collections and the Library Foundation’s contemporary interpretations of these collections in exhibitions have been an important source of inspiration and a fantastic place to direct my own interests. I love the idea of an exhibition as an essay, or a short story told spatially. Inevitably, the stories the Library chooses to author through their exhibitions will help us be better readers of our city, our environment, our history, and ourselves.”

Fall 2021 Calendar



Getting Louder.
ALoud is the Library Foundation of Los Angeles’ series of bold, powerful programs that are evolving as we experiment, take risks, and try new ideas that are informed by the changing world and the audiences we serve. New programs are frequently added, and all programs are subject to change. lfla.org/aloud

This coming year, ALoud will look at the theme of **Resilience**. How do we manage to survive and blossom in the face of tragedy, controversy, and unrest? Where do we find strength? Our programs will look at individuals who have turned to writing to make sense of their situation, and it is through the written word that each of them has found clarity and resilience in the face of adversity.



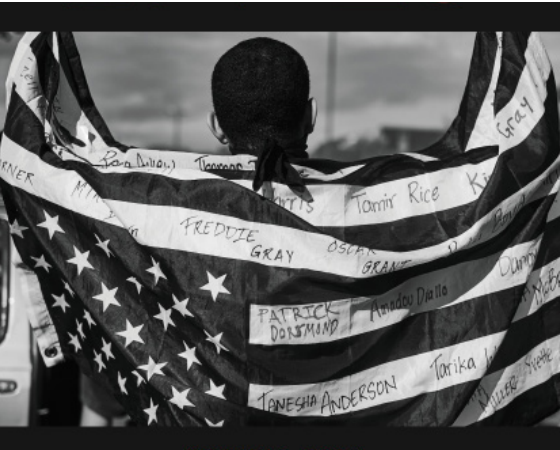
WEDNESDAY, OCTOBER 20 @ 5:00 PM PST
The Book of Form and Emptiness
Ruth Ozeki
In Conversation with Aimee Bender

Award-winning novelist, filmmaker, and Zen Buddhist priest Ozeki discusses her brilliantly inventive new novel about loss, growing up, and the resiliency of human relationships.



THURSDAY, OCTOBER 28 @ 5:00 PM PST
Freeman’s Biannual: Change
with John Freeman with Rick Bass, Lana Bastašić, and Lina Mounzer

A celebration of the latest installment of John Freeman’s acclaimed literary journal, featuring some of today’s top writers on the hope and pain of the ever-changing present.



TUESDAY, NOVEMBER 9 @ 5:00 PM PST
The Matter of Black Lives: Writing from The New Yorker
Jelani Cobb
In Conversation

From stories of endurance and resilience to strength and pain, historian and writer Cobb shares from a new anthology illuminating the work of James Baldwin, Toni Morrison, Ta-Nehisi Coates, Zadie Smith, and more.



TUESDAY, NOVEMBER 16 @ 5:00 PM PST
The Sentence
Louise Erdrich
In Conversation

The Pulitzer Prize and National Book Award-winning author discusses her latest novel, a wickedly funny ghost story that reckons with some of last year’s monumental real-life events.

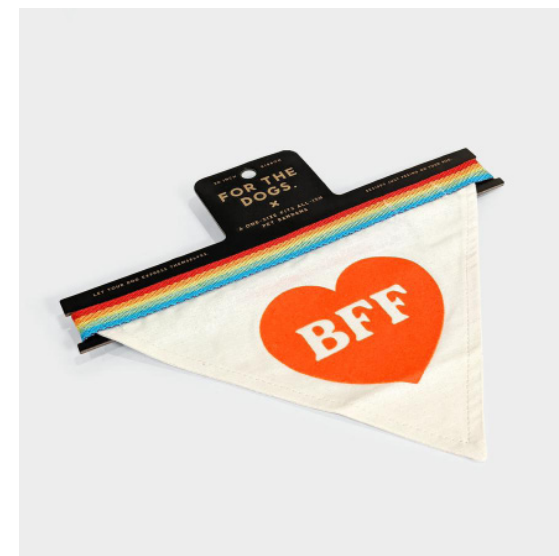
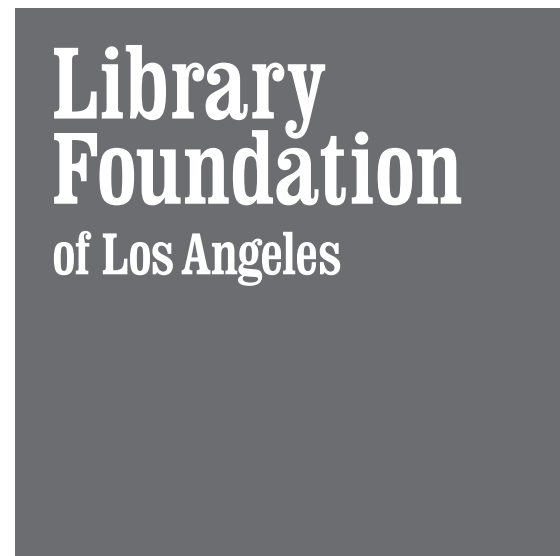
**Please note: tickets for this program include a book purchase.*

A Note About In-Person Programming

As of June 15, 2021, the Los Angeles Public Library has reopened its physical doors and is offering in-person services at most library locations. Services may include browsing, computer access, pick up of holds, mobile printing orders, and checking out of materials inside libraries. During this phase of reopening, **in-person programs and classes are not yet available**. Many programs are still available virtually.

Programs produced by the Library Foundation of Los Angeles, including ALoud, will continue to be hosted virtually, with in-person events anticipated to return in Winter 2022.

Need more ALoud?
Visit the LFLA’s Media Archive to listen to podcasts and watch recordings of hundreds of past ALoud programs, old and new. lfla.org/archive



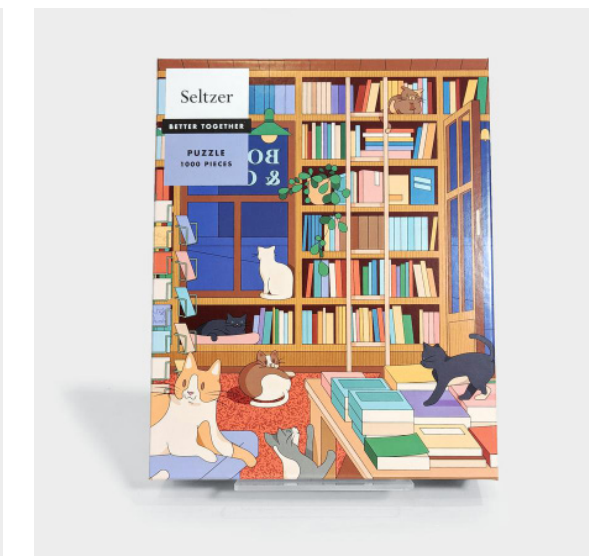
BFF Dog Bandana \$15.00



California 2022 Desk Calendar
\$14.95



Bavel Cookbook
\$40.00



Cat Bookshop Puzzle
\$25.00

HOLIDAY GIFT GUIDE

This holiday season, it's more important than ever to support your favorite small businesses and shop local!

Library Foundation Members receive a discount on The Library Store's carefully curated catalog of books, tees, totes, stationery and much more. Proceeds from all sales support the Los Angeles Public Library.

213.228.7550 shop.lfla.org
librarystore@lfla.org @TheLibraryStore



Wild Mushrooms Mug
\$15.00



Black Rose Candle
\$50.00

THE LIBRARY STORE IS OPEN TO IN-PERSON SHOPPING!

630 W Fifth Street
Los Angeles, CA 90071

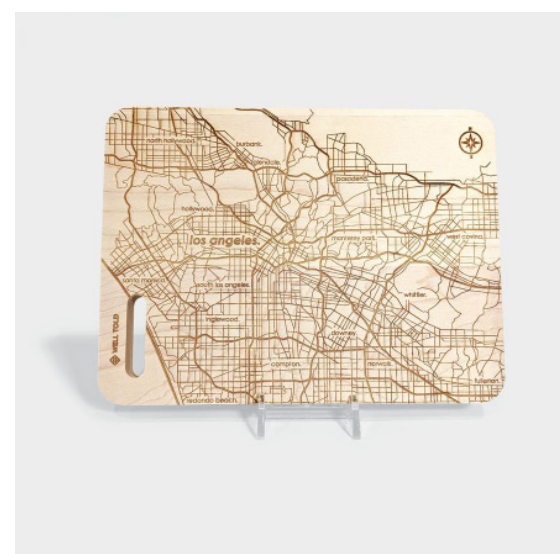
Mon. 11 am – 5:30 pm
Tues. 11 am – 5:30 pm
Wed. 11 am – 5:30 pm
Thurs. 11 am – 5:30 pm
Fri. 11 am – 5:30 pm
Sat. & Sun. CLOSED

*Check shop.lfla.org for most updated hours of operation. Masks are required per L.A. County guidelines.

The digital shop is always open, with standard rates for shipping in the continental U.S.



Amuseable Blue Cheese
\$23.50



Los Angeles Maple Bar Prep & Cutting Board 6"x 8"
\$32.00



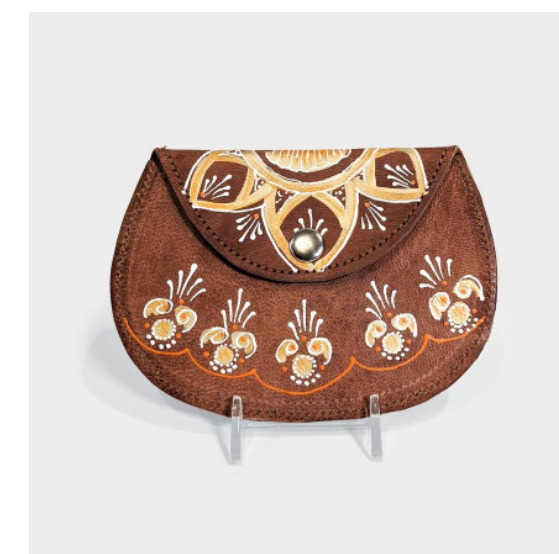
Los Angeles
\$75.00



Los Angeles Baby Swaddle Blanket
\$20.00



Los Angeles Shopper Tote
\$26.95

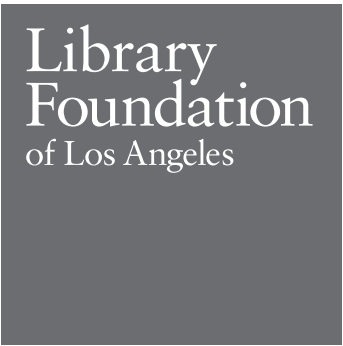


Malala Coin Purse
\$12.00



Shroom & Board Knee High Socks
\$12.00

Live from the Library



On September 28, The Council of the Library Foundation hosted its first in-person Council Literary Series dinner since the pandemic halted events in February 2020. The evening featured author Michael Lewis speaking about his apropos nonfiction book, *The Premonition: A Pandemic Story*. With COVID protocols in place, the event was enthusiastically and joyously attended by some of the Library Foundation's most dedicated supporters.



Dan Harrison (Interlocutor), Nikhil Jhaveri, Council President Ela Jhaveri, Guest Author Michael Lewis



Sharon Gam, Nancy Koven, Judy Richman, Michèle and Larry Lynch



Tam and Don Dickerson



Dan Harrison and Michael Lewis in conversation



Will Stubbs, Ames Cushing, Thomas Cushing



City Librarian John Szabo sporting the new "Read Baby Read" backpack